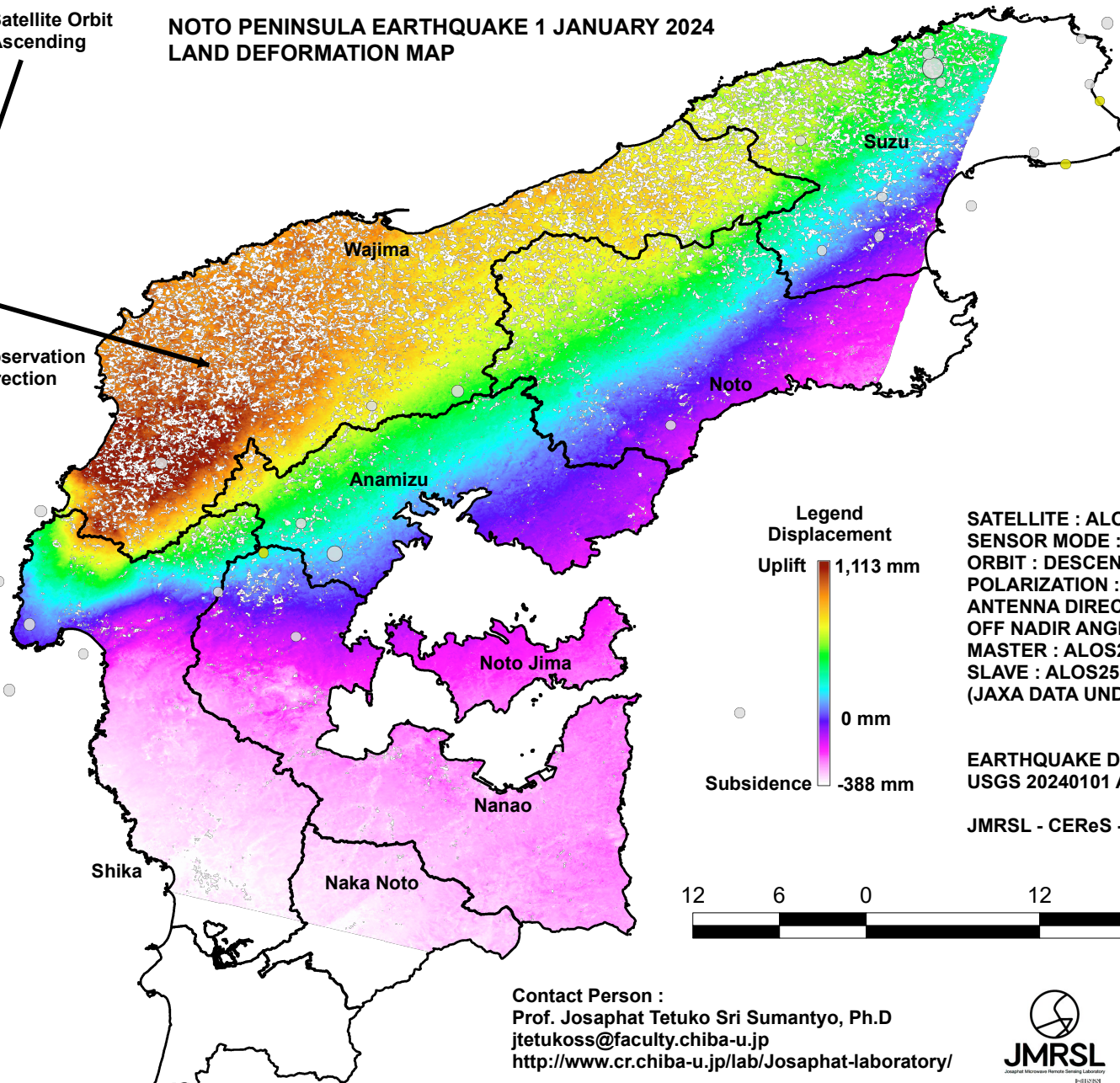


### NOTO PENINSULA EARTHQUAKE 1 JANUARY 2024 LAND DEFORMATION MAP

Satellite Orbit  
Ascending

Observation  
Direction



Legend  
Displacement  
Uplift 1,113 mm

0 mm  
Subsidence -388 mm

SATELLITE : ALOS 2 PALSAR 2  
SENSOR MODE : SM1  
ORBIT : DESCENDING  
POLARIZATION : HH  
ANTENNA DIRECTION : LEFT  
OFF NADIR ANGLE : 35.4 DEGREES  
MASTER : ALOS2487932830-230606  
SLAVE : ALOS2518982830-240102  
(JAXA DATA UNDER ER3A2N102)

EARTHQUAKE DATA :  
USGS 20240101 AND 20240102

JMRSL - CEReS - RIDM Chiba University



Contact Person :  
Prof. Josaphat Tetuko Sri Sumantyo, Ph.D  
jtetukoss@faculty.chiba-u.jp  
<http://www.cr.chiba-u.jp/lab/Josaphat-laboratory/>

